



LINKIN 135/150 MANUAL

bold
CYCLES

Technical Data:



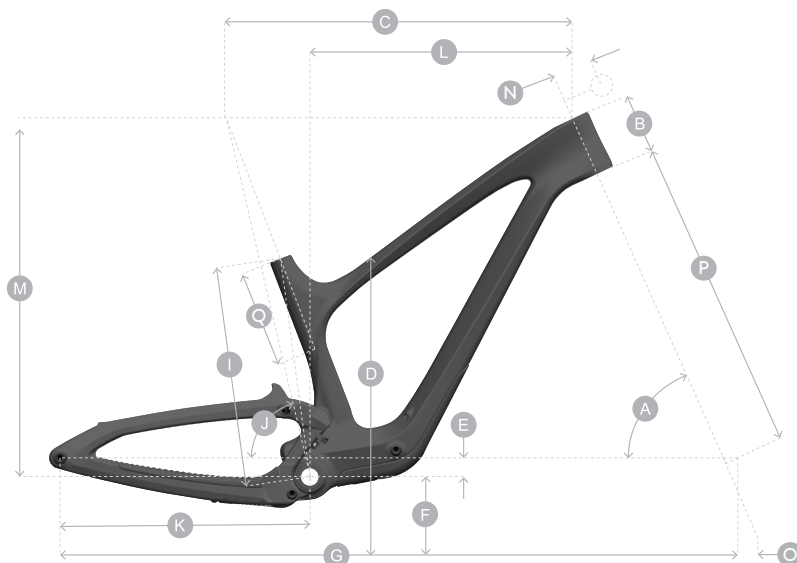
For a complete installation, only take your bike to an authorized Bold dealer for assistance.



Tyre sizes often vary from brand to brand. Always ensure that the frame, linkage and swingarm tyre clearance are correct when replacing the rear tyre.

Seatpost:	34.9mm
Seatpost Clamp:	38.2mm
Travel:	135mm / 150mm Linkage Specific
Shock Length:	185mm
Shock Stroke:	55mm
Hardware M/Frame:	IGUS
Hardware Linkage:	17 x 8mm
BB Housing:	92x41mm
Chainring Max:	36 Tooth
Chain Line:	55mm
Tyre Width Max:	2.6 Inches

Geometry:



Linkin 135

	Low-Slack High-Steep	Low-Slack High-Steep	Low-Slack High-Steep	Low-Slack High-Steep
	Sm	Med	Lg	X/Lg
A HEAD TUBE ANGLE	64.4 / 65.8	64.4 / 65.8	64.4 / 65.8	64.4 / 65.8
B HEAD TUBE LENGTH	90.0	105.0	120.0	135.0
C HORIZONTAL TOP TUBE	546.2	597.0	628.4	661.5
D SUPPORT HEIGHT	675.0	707.0	733.0	760.0
E BOTTOM BRACKET OFFSET	41 / 33	41 / 33	41 / 33	41 / 33
F BOTTOM BRACKET HEIGHT	334 / 342	334 / 342	334 / 342	334 / 342
G WHEELBASE	1171.0	1213.0	1249.0	1286.0
I BOTTOM BRACKET CENTRE TOP TUBE	365.0	395.0	425.0	455.0
J SEAT TUBE ANGLE	78.7	77.7	77.7	77.7
K CHAINSTAY LENGTH	434.1	434.1	434.1	434.1
L REACH	425.0	460.0	490.0	520.0
M STACK	602.0	616.0	629.0	642.0
N STEM LENGTH	50.0	50.0	50.0	50.0
O TRAIL	130.6/120	130.7/120.2	130.8/120.4	130.9/120.5
P FORK LENGTH	551.0	551.0	551.0	551.0
CRANK LENGTH	170.0	170.0	170.0	170.0
FORK OFFSET	44.0	44.0	44.0	44.0

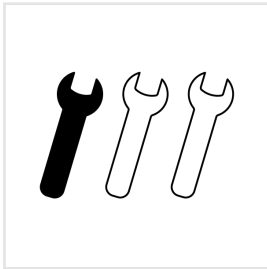
Linkin 150

	Low-Slack High-Steep	Low-Slack High-Steep	Low-Slack High-Steep	Low-Slack High-Steep
	Sm	Med	Lg	X/Lg
A HEAD TUBE ANGLE	64.2/65.6	64.2/65.6	64.2/65.6	64.2/65.6
B HEAD TUBE LENGTH	90.0	105.0	120.0	135.0
C HORIZONTAL TOP TUBE	546.8	595.9	629.0	662.1
D SUPPORT HEIGHT	683.0	715.0	740.0	766.0
E BOTTOM BRACKET OFFSET	35 / 27	35 / 27	35 / 27	35 / 27
F BOTTOM BRACKET HEIGHT	683	715	740	766
G WHEELBASE	1175.0	1216.0	1253.0	1289.0
I BOTTOM BRACKET CENTRE TOP TUBE	305.0	395.0	425.0	455.0
J SEAT TUBE ANGLE	78.4	77.4	77.4	77.4
K CHAINSTAY LENGTH	434.0	434.0	434.0	434.0
L REACH	425.0	460.0	490.0	520.0
M STACK	604.0	617.0	631.0	644.0
N STEM LENGTH	50.0	50.0	50.0	50.0
O TRAIL	132.5/121.9	132.6/122.1	132.6/122.2	132.7/122.3
P FORK LENGTH	561.0	561.0	561.0	561.0
CRANK LENGTH	170.0	170.0	170.0	170.0
FORK OFFSET	44.0	44.0	44.0	44.0

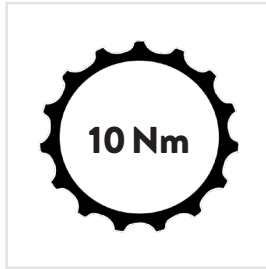
PLEASE NOTE THE ICONS BELOW THROUGHOUT THIS MANUAL FOR SAFE PRACTICE.



ANTI SEIZE REQUIRED



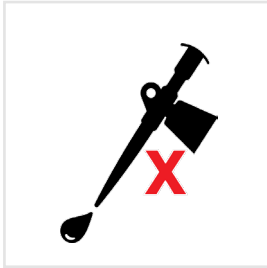
TASK DIFFICULTY



TORQUE AMOUNT Nm



GREASE



NO GREASE



CARBON GREASE



THREADLOC



LOCTITE



ALLEN KEY SIZE mm



TORX TOOL SIZE



TORQUE CHECK

Hangers & Axles:

The Linkin has only one option of the rear hanger, this is the Sram UDH available from Sram and Scott. UDH has a torque of 25 NM reverse thread.

No grease on the hanger assembly.

**286000 - SCO DROPOUT
SRAM UDH 21**



Reverse Thread



The new rear axle for the Linkin contains a “plug in “ tool containing T30/T25 and M6 Hex key.

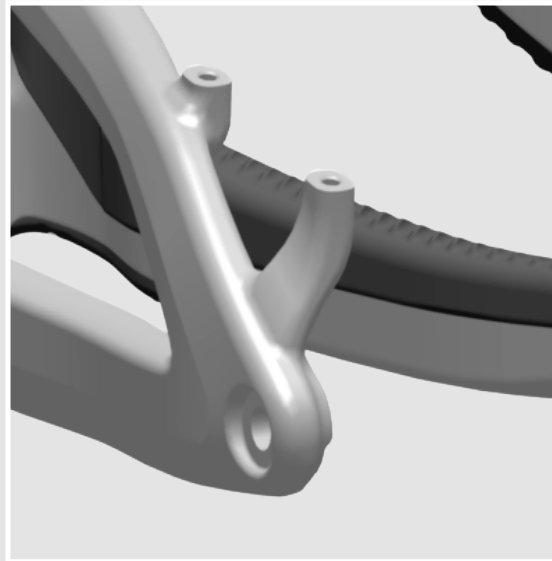
Torque for this is 10 Nm

**290016 - SCO AXLE RWS REAR
148X12 SPARK PLUG 22**



Rear Brake:

The brake caliper mount is a standard post mount 180mm only.



Chainguide & Protection:



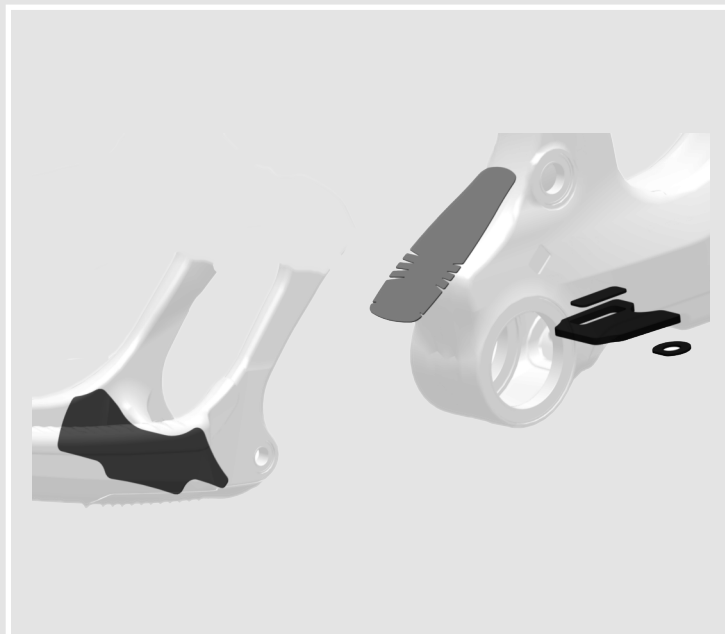
The Linkin Chainguide has a maximum chainring size of 36T

291214 - BLD CHAINGUIDE LINKIN 22

Chainguide & Protection continued:

There are two protection kits available.

**291221 - BLD PROTECTION
FILM LINKIN 22**



Chainstay / seatstay kit.

**291215 - BLD C-STAY S-STAY
PROTECTOR LINKIN 22**

Maximum Seatpost Insertion:

Please observe the maximum seatpost insertion as not to damage the frame, this number is size specific.

This number should not be exceeded.

Small - 272mm
Medium - 302mm
Large - 332mm
X-Large - 362mm



Dropper Seatpost:

The Linkin has a dropper in 34.9mm, there will be 2 service kits available.

292669- BLD SEATPOST-SERV AIR CART SYNC 34.9

Air cartridge only in either 150mm/170//200mm

292670 - BLD SEATPOST-SERV.SEAL KIT SYNC 34.9

Including upper and lower bushings, seal, spring, mid-cap, brass pins and 50ML lube.

Headset:

It is important to install the headset correctly depending on the set up required. There are two types of headset cups.

0° & 0.6° (64° & 65°) These can be identified from the stamp on the inner surface of the headset cup

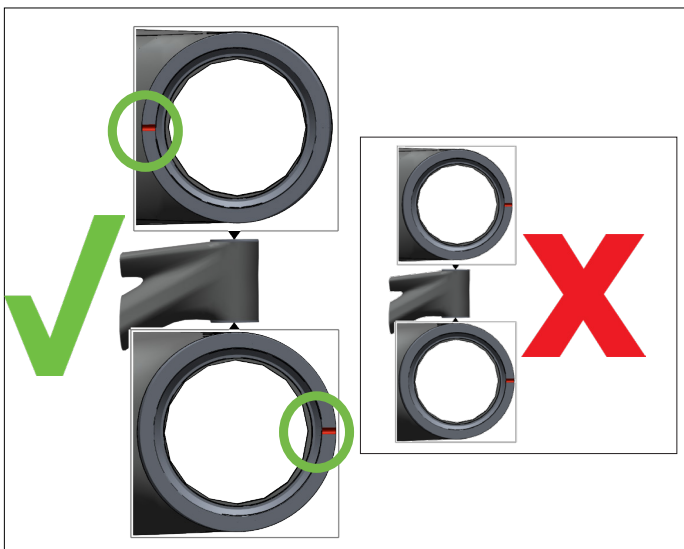
The headset is available in two options:

288251 SYN HEADSET ZS56/28.6-ZS56/40 MTB

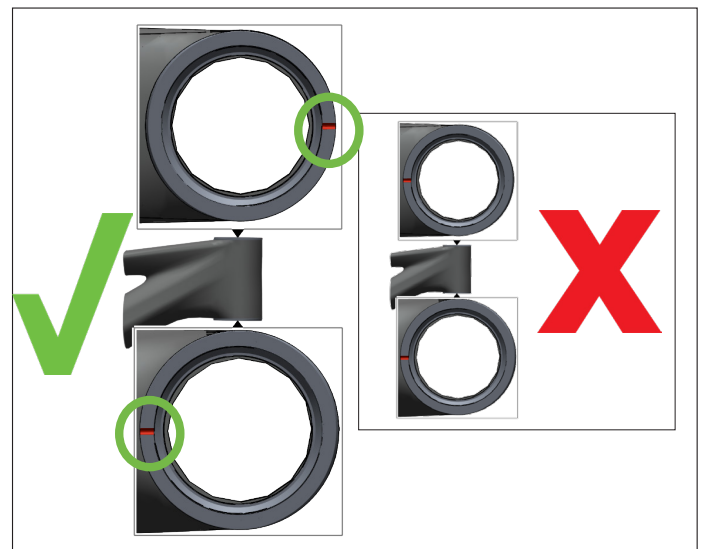
290060 SCO HEADSET CUP KIT SPARK 22



Do not use a standard headset tool to remove these plastic headset cups.



Slacker



Steeper

Headset continued:

For the stem cover and spacers there will be one kit to cover all options.

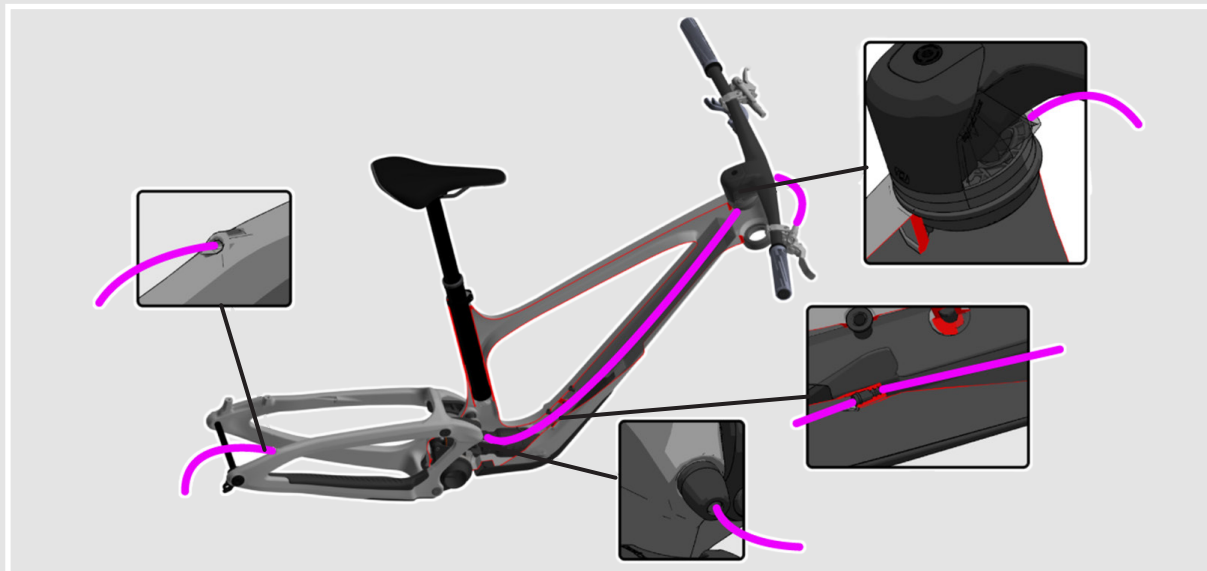
The headset spacer kit for all Linkin bikes contains 2 x 5mm / 2 x 10mm / compression ring and the stem cap assembly.

**292667 BLD - STEM SPACER
KIT LINKIN 22**

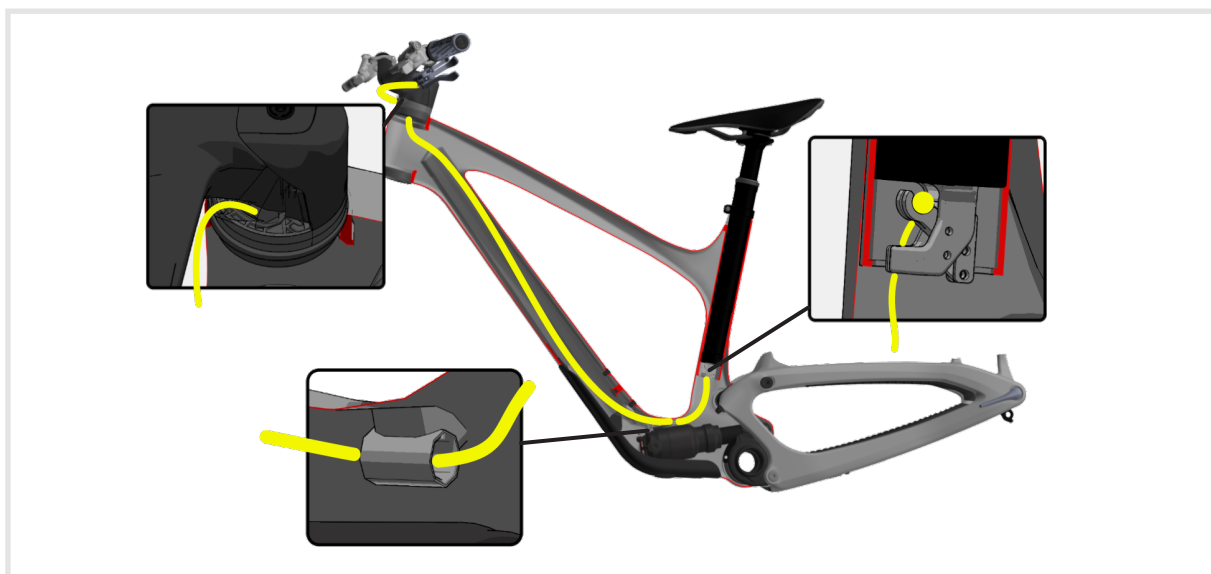
**297522 SCO STEM SPACER/
TOP CAP GENIUS 23**



Cable Routing:

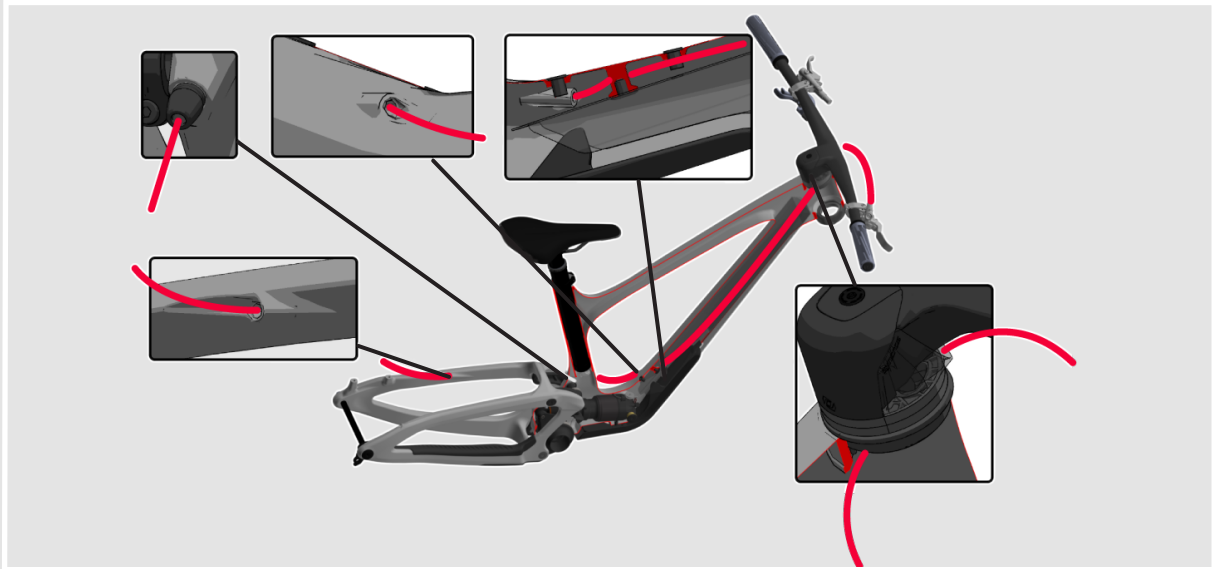


Rear derailleur



Dropper seatpost

Cable Routing continued:



Rear brake hose



Tracloc cable

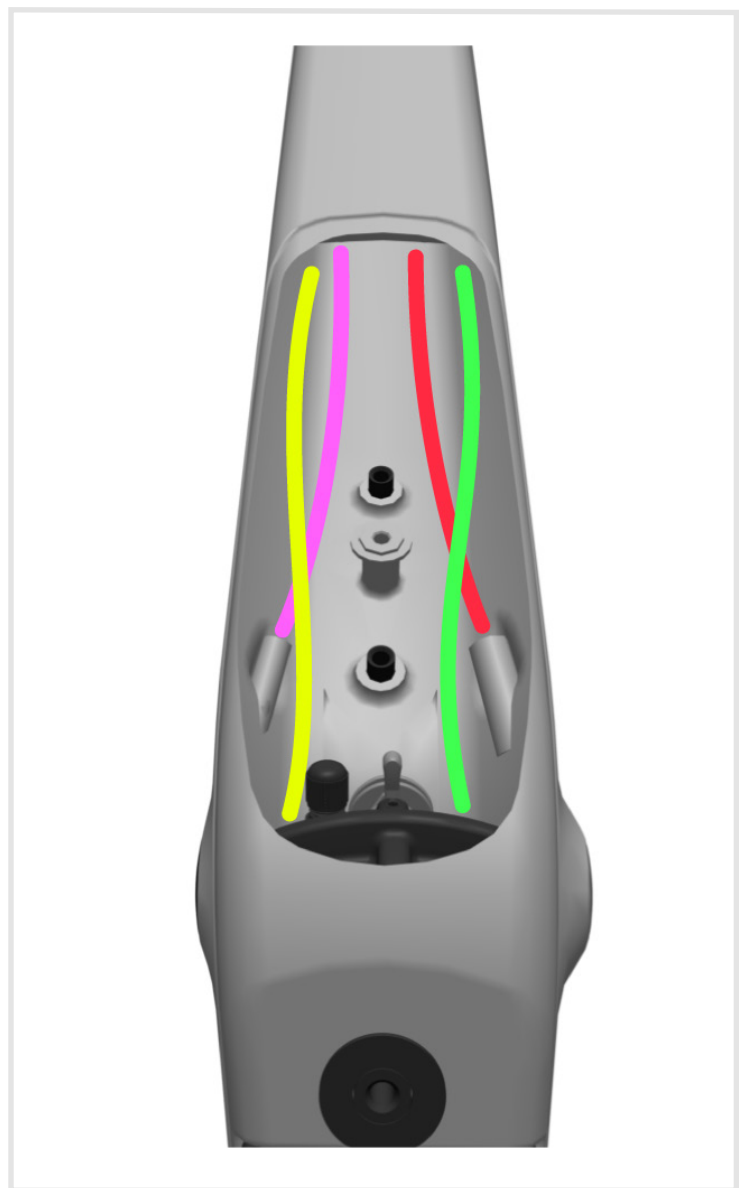
Cable Routing continued:

Dropper Seatpost

Rear Shifting

Remote Tracloc

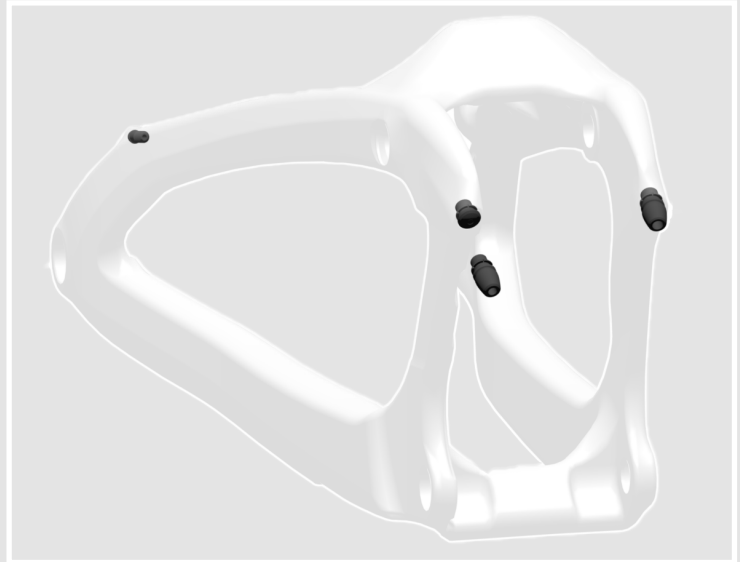
Rear Brake



Cable Guides:

The Linkin has internal cable routing, so just one small kit for the front of the swingarm is needed.

**291222 - BLD CABLEGUIDE
LINKIN 22**



The handlebar cable guide.

**290054 - SCO HANDLEBAR
CABLEGUIDE KIT MTB IC 22**

Cable Guides continued:

There will be a larger cover for the base of the downtube, this will cover the access to the shock and cable routing.

**291223 BLD - CABLE/SHOCK
DT COVER LINKIN 22**

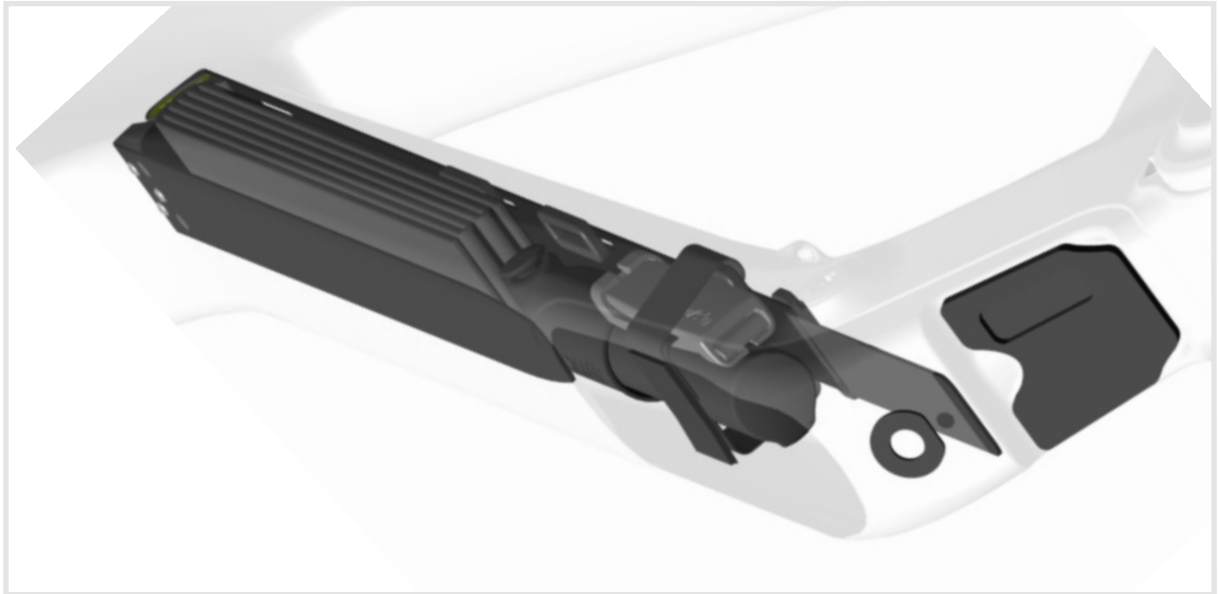


Bottle Mounting:



The Linkin will only accommodate one bottle on the downtube.

Storage:



The Linkin will have a storage box in the downtube. This will include a tube, pump and a multi tool (complete bike only)

297747 BLD SAVE THE DAY KIT 2.0

Shock/Suspension/Pivots/Linkages:

The rear shock has a tracloc system, this will incorporate the dropper seatpost as well.

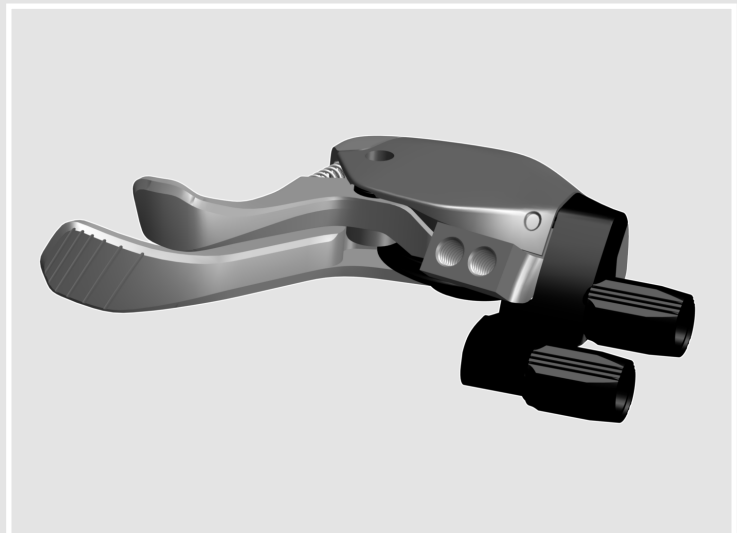
291219 - BLD TRACLOC LINKIN 22

The rear shock is a Standard Fox part with a medium tune.

The lower shock bush is unique to the Linkin , 17 X 8MM

292666 - BLD REAR SHOCK LINKIN FOX KSH 22

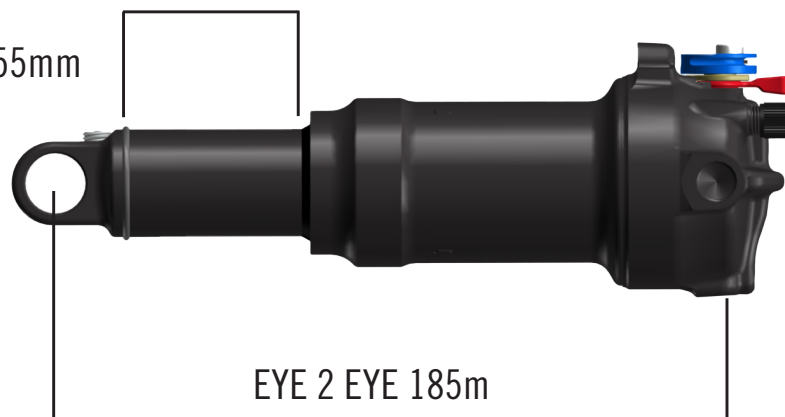
294418 - BLD SHOCK BUSH SET FOX LINKIN 22



REMOVE THE SAG RUBBER, NOT TO BE USED



STROKE 55mm



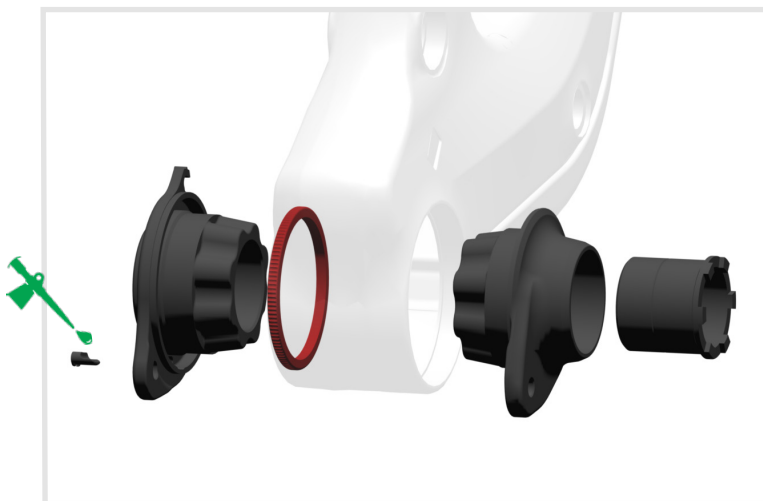
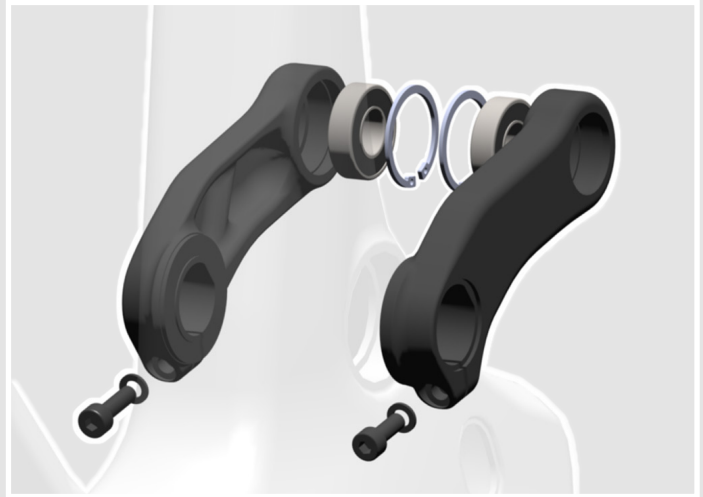
EYE 2 EYE 185m

Shock/Suspension/Pivots/Linkages continued:

There are three linkage sets for the Linkin.

The upper linkage set.

291213 - BLD LINKAGE UPPER LINKIN 22



The lower link set (outer). Each outer link comes with a pre-load ring, ensure that the thread on the pre-load ring is greased.

291286 - BLD LINKAGE LOWER OUTER LINKIN 22

Shock/Suspension/Pivots/Linkages continued:

The inner lower linkage, can be changed to alter the travel, between 135mm and 150mm.

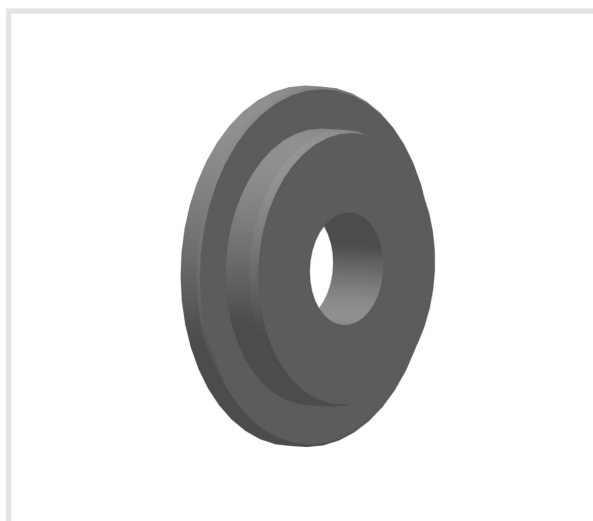
291287 - BLD LINKAGE INNER TRAVEL ADJ LINKIN 22

The bearings will be three different types.

SEATSTAY/ UPPER LINKAGE X2- 22X10X6MM (9600)

CHAINSTAY / LOWER LINK - X2- 19X10X8MM (3800)

BB MAIN LINK X2 – 72X55X9MM (6811)



To help the fitting of the main lower bearing 72x55x9mm (6811) there is a press available that is compatible with the Park HHP-2 headset press.

292672 - BLD TOOL MAIN PIVOT PRESS LINKIN

291288 - BLD SWINGARM REP KIT LINKIN 22

291285 - BLD SHOCK MOUNT BOLT KIT LINKIN 22

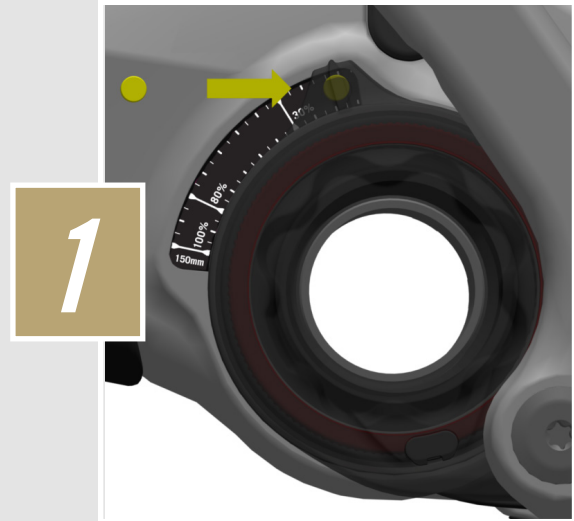
Sag:

Please ensure standard SAG setting protocol is used when setting the SAG, the below only covers the unique setup of the Linkin.

For setting the SAG on the Linkin without assistance you will need the magnet that is supplied with the bike. If this needs to be replaced it can be found with the following..

291218 BLD MAGNET SAG KIT LINKIN 22.

This kit also includes new SAG guides if the travel is to be adjusted.



With the bike unloaded slide the magnet under the linkage plate on the left-hand side.



Then sit on the bike, this will allow the linkage to push the magnet into place.

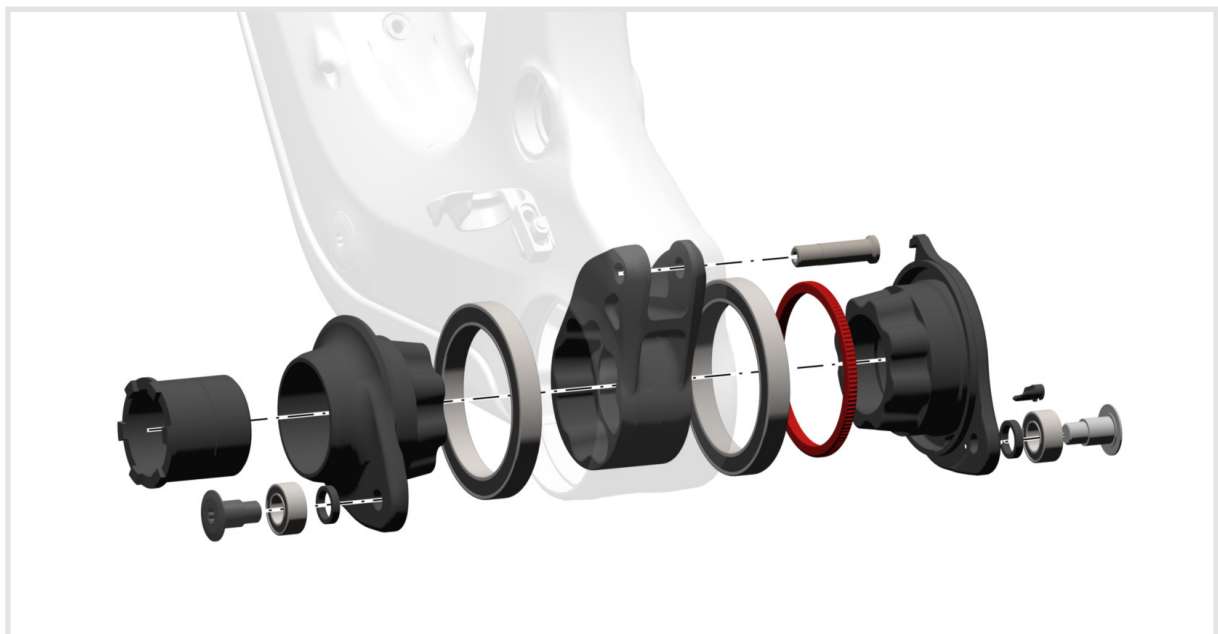
Sag:

Once the rider has dismounted the bike the SAG can be checked. Adjust the shock pressure as required.

3

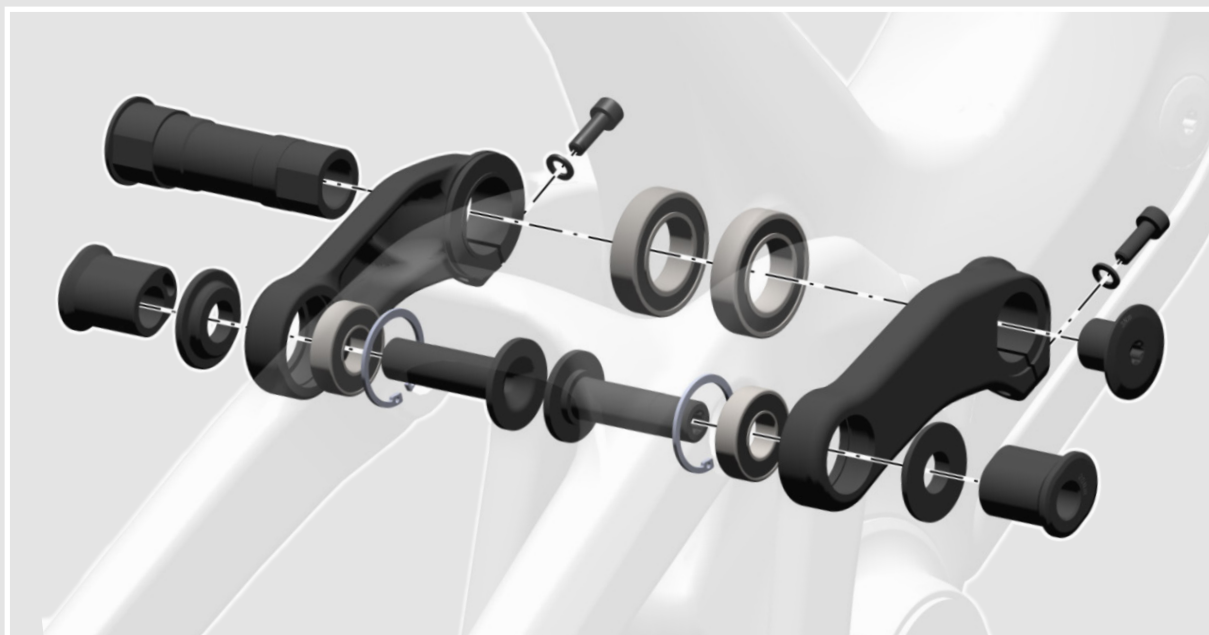


Suspension Overview:



MAIN PIVOT BB / CHAINSTAY

Suspension Overview continued:

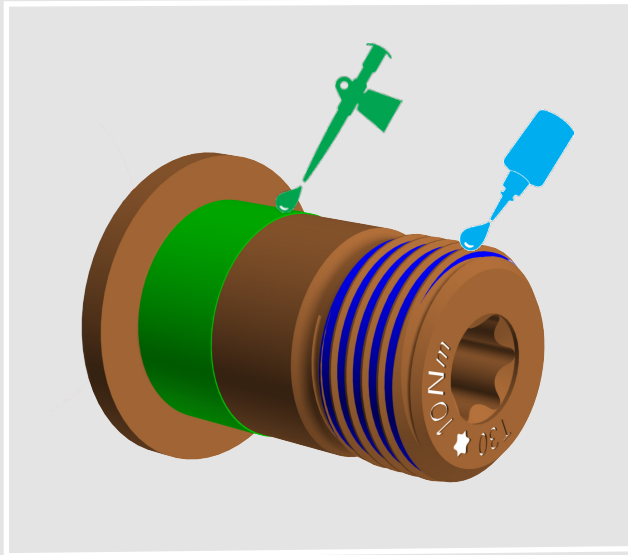


TOP LINKAGE / SEATSTAY

SHOCK MOUNTING



Suspension Overview continued:



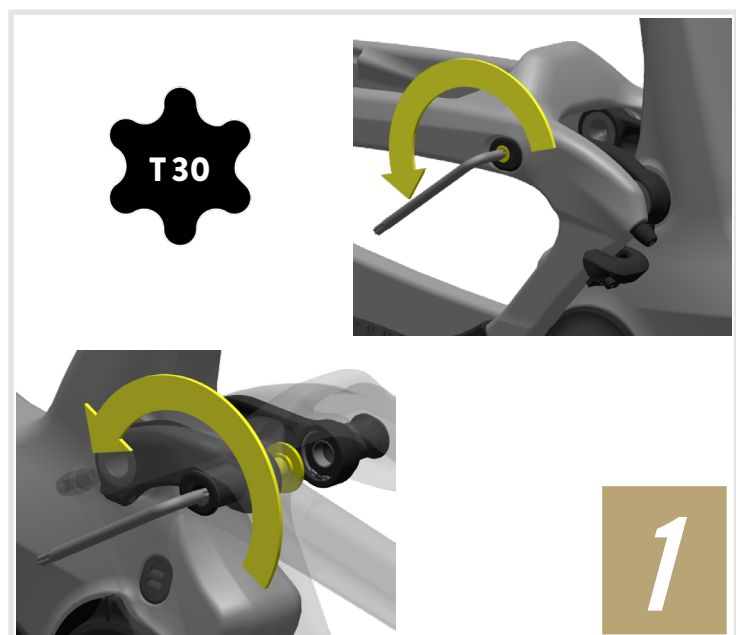
For the following instructions please follow the torque settings indicated on the bolts, use threadloc 242 & grease on the indicated areas unless mentioned in the assembly guide.

Geo Chip:

The geometry on the Linkin can be adjusted by altering the length of the seatstay via the geo chip, this is located at the top of the seatstays.

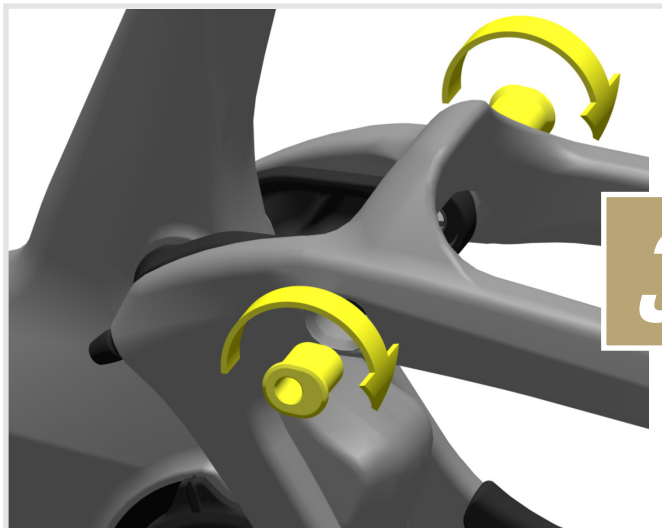
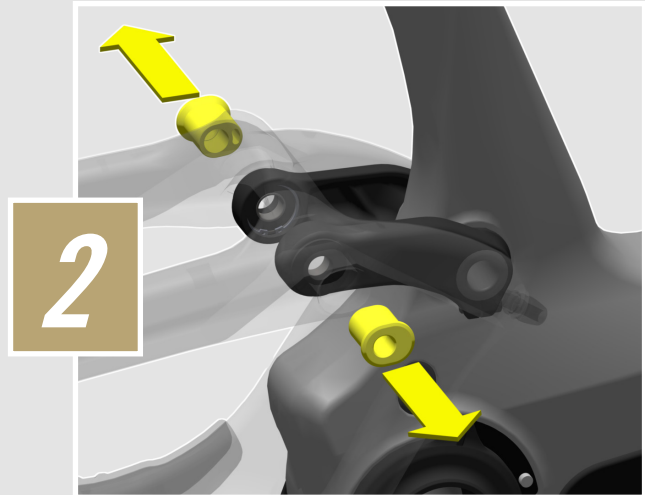
By flipping the chip the BB height can be altered by 6.3mm and the seat and head tube angle by 0.52°

Loosen and remove left and right geometry chips on the upper pivot of the seatstays.



Suspension Overview continued:

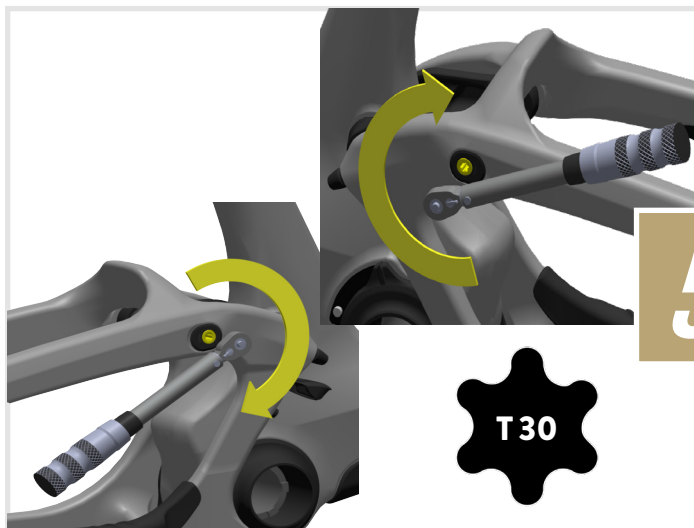
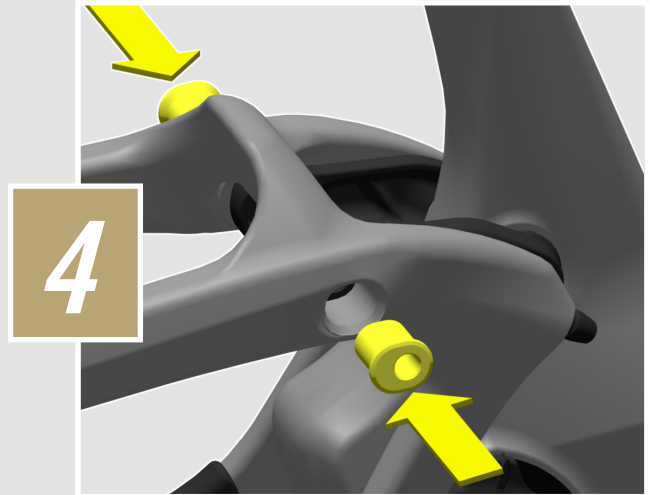
Once the bolts are loose remove the Geo Chips, (leave the inner bolts in the frame).



Flip both inserts 180°

Suspension Overview continued:

Refit both inserts.



Tighten left & right bolts to 20Nm.



Guarantee on Bold bikes

Manufacturer's Guarantee

When purchasing a new Bold bicycle from an authorized Bold dealer, SCOTT Sports SA grants a manufacturer's guarantee subject to the following provisions.

Conditions

The manufacturer's guarantee is only granted to the first-time buyer of a Bold bicycle who has purchased it from an authorized Bold dealer.

Duration

The manufacturer's guarantee is granted from the date of purchase for a period of five years on bicycle frames and rear ends. The guarantee period is reduced to three years, if the Bold bicycle is not serviced at least once a year by an authorized Bold dealer. Maintenance services must be carried out in accordance with the maintenance instructions in the Bold manual and must be confirmed there by the stamp and signature of the authorized Bold dealer.

For frames and rear ends of Category 5 bicycle models the duration of the manufacturer's guarantee is limited to two years.

If a defect on the Bold bicycle is remedied within the scope of a manufacturer's guarantee or a warranty claim, the duration of the manufacturer's guarantee is not extended. The manufacturer's guarantee ends, when the first-time buyer transfers ownership of the Bold bicycle to a third person.

Assertion

The manufacturer's guarantee is provided by SCOTT Sports SA, Route du Crochet 11, 1762 Givisiez. The buyer must inspect the Bold bicycle immediately after purchase and notify his authorized Bold dealer at once in writing of any obvious defects. Hidden defects must be reported immediately after their discovery. In the event of a guarantee claim, the Bold bicycle must be handed over to an authorized Bold dealer. The latter will contact Bold to remedy the defect. The assertion of a guarantee claim always requires the presentation of the original proof of purchase as well as the proof of maintenance service in the Bold manual.

Performance of Bold in the event of a guarantee claim

In the event of a guarantee claim, Bold will repair the defect at its own discretion or replace the defective product with a product of similar quality, whereby colour and model deviations are possible. If a repair or replacement is not possible, a purchase price refund will be made taking into account previous use. Bold is entitled to commission third parties to remedy the defect.

Limitations

The manufacturer's guarantee applies exclusively to frames, swingarms and rigid forks of Bold bicycles. Bicycle components are excluded from this manufacturer's guarantee.

The manufacturer's guarantee does not apply to normal wear and tear, damage caused by accidents or other excessive force on the Bold bicycle, corrosion, improper maintenance, incorrect assembly and assembly of unsuitable components or accessories as well as cosmetic defects, for example in the varnish.

The manufacturer's guarantee does not apply to Bold bicycles that have been used in a rental shop.

Miscellaneous

These manufacturer's guarantee provisions apply to all Bold bicycles as of model year 2022.

Statutory warranty rights of the buyer and guarantees of component manufacturers (Shimano, SRAM etc.) remain unaffected by this manufacturer's guarantee.

The place of jurisdiction for all disputes in connection with this manufacturer's guarantee is Fribourg, Switzerland. This manufacturer's guarantee is subject to Swiss law to the exclusion of all legislation that refers to foreign law.

bold

C Y C L E S

All rights reserved ©2023 SCOTT Sports SA



ILLUSTRATIONS

Background: Designed by starline / Freepik



The information contained in this techbook is in various languages but only the English version will be relevant in case of conflict.

Although SCOTT Sports SA has published all information contained in this techbook after careful examination, SCOTT Sports SA assumes no liability for being up-to-date, correct, reliable or complete. SCOTT Sports SA reserves the right to change the content of this techbook, particularly colors, materials and specifications, at any time without prior notice. Any liability shall be exempted.

Products shown may not be available in all regions, please check with your local SCOTT retailer for availability.



BOLD CYCLES
SCOTT SPORTS SA
Route du Crochet 11
1762 Givisiez
Switzerland
www.scott-sports.com

Authorized Representative: Beat Zaugg, Pascal Ducrot