



UNPLUGGED
MANUAL

bold
CYCLES

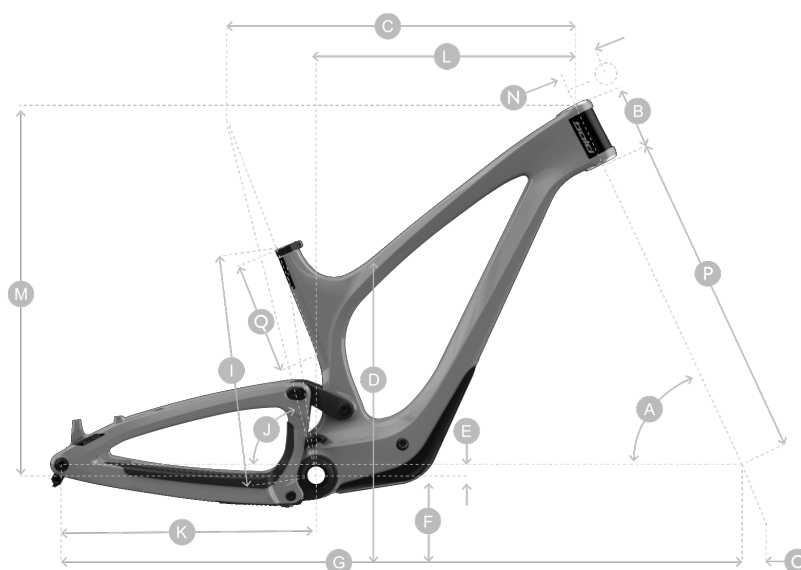
Technical Data:

Seatpost:	34.9mm
Seatpost Clamp:	38.2mm
Travel:	Fr: 170mm / Rr: 160mm
Shock Length:	185mm
Shock Stroke:	55mm
Hardware M/Frame:	Trunnion
Hardware Linkage:	17 x 8mm
BB Housing:	92x41mm
Chainring Max:	34 Tooth
Tyre Width Max:	2.5 Inch



Tyre sizes often vary from brand to brand, always ensure the tyre clearance is adequate throughout the tyres rotation.

Geometry:



Unplugged 160/170 29

	Low-Slack High-Steep	Low-Slack High-Steep	Low-Slack High-Steep	Low-Slack High-Steep
	Sm	Med	Lg	X/Lg
A HEAD TUBE ANGLE	63,2 / 64,5	63,2 / 64,5	63,2 / 64,5	63,2 / 64,5
B HEAD TUBE LENGTH	90	105	120	135
C HORIZONTAL TOP TUBE	548	596	628	661
D STANDOVER HEIGHT	693.0	715.0	733.0	762.0
E BOTTOM BRACKET OFFSET	33 / 25	33 / 25	33 / 25	33 / 25
F BOTTOM BRACKET HEIGHT	340 / 348	340 / 348	340 / 348	340 / 348
G WHEELBASE	1203 / 1193	1244 / 1235	1281 / 1271	1317 / 1308
I BOTTOM BRACKET CENTRE TOP TUBE	381	403	435	470
J SEAT TUBE ANGLE	78.6	77.8	77.8	77.8
K CHAINSTAY LENGTH	437.0	437.0	437.0	437.0
L REACH	424.0	459.0	489.0	519.0
M STACK	617.0	631.0	644.0	658.0
N STEM LENGTH	40.0	40.0	40.0	40.0
O TRAIL	139 / 129	139 / 129	139 / 129	139 / 129
P FORK LENGTH	583.7	583.7	583.7	583.7
CRANK LENGTH	170.0	170.0	170.0	170.0
FORK OFFSET	44.0	44.0	44.0	44.0

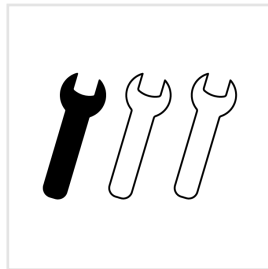
Unplugged 160/170 Mullet

	Low-Slack High-Steep	Low-Slack High-Steep	Low-Slack High-Steep	Low-Slack High-Steep
	Sm	Med	Lg	X/Lg
A HEAD TUBE ANGLE	63.2 / 64,5	63.2 / 64,5	63.2 / 64,5	63.2 / 64,5
B HEAD TUBE LENGTH	90.0	105.0	120.0	135.0
C HORIZONTAL TOP TUBE	548.0	595.0	628.0	661.0
D STANDOVER HEIGHT	693.0	715.0	733.0	762.0
E BOTTOM BRACKET OFFSET	21 / 14	21 / 14	21 / 14	21 / 14
F BOTTOM BRACKET HEIGHT	340 / 347	340 / 347	340 / 347	340 / 347
G WHEELBASE	1205 / 1196	1246 / 1237	1283 / 1274	1320 / 1310
I BOTTOM BRACKET CENTRE TOP TUBE	381	403	435	470
J SEAT TUBE ANGLE	78.6	77.8	77.8	77.8
K CHAINSTAY LENGTH	438.0	438.0	438.0	438.0
L REACH	424.0	459.0	489.0	519.0
M STACK	617.0	631.0	644.0	658.0
N STEM LENGTH	40	40	40	40
O TRAIL	139 / 129	139 / 129	139 / 129	139 / 129
P FORK LENGTH	583.7	583.7	583.7	583.7
CRANK LENGTH	170.0	170.0	170.0	170.0
FORK OFFSET	44.0	44.0	44.0	44.0

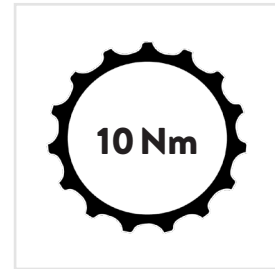
PLEASE NOTE THE ICONS BELOW THROUGHOUT THIS MANUAL FOR SAFE PRATICE.



ANTI SEIZE REQUIRED



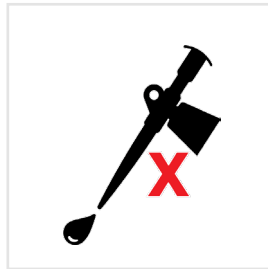
TASK DIFFICULTY



TORQUE AMOUNT Nm



GREASE



NO GREASE



CARBON GREASE



THREADLOC



BEARING FIT



ALLEN KEY SIZE MM



TORX TOOL SIZE



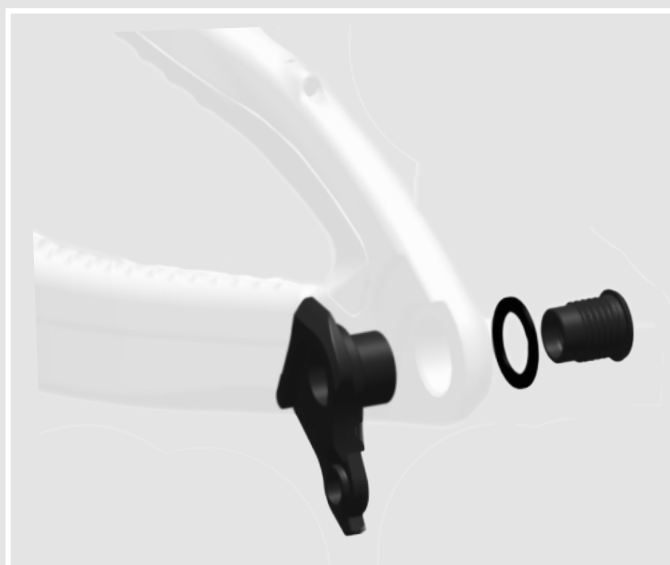
TORQUE CHECK

Hangers & Axles:

The Unplugged has only one option of the rear hanger, this is the Sram UDH available from Sram and Bold (only if your local agent cannot supply). UDH note no grease on fitting and correct torque 25 Nm reverse thread.

No grease on the hanger assembly.

286000 - SCO DROPOUT SRAM UDH 21



Reverse Thread



The new rear axle for the 2022 Unplugged is identical to the 2022 Scott Spark and contains a “plug in” tool containing T30/T25 and M6 Hex key.

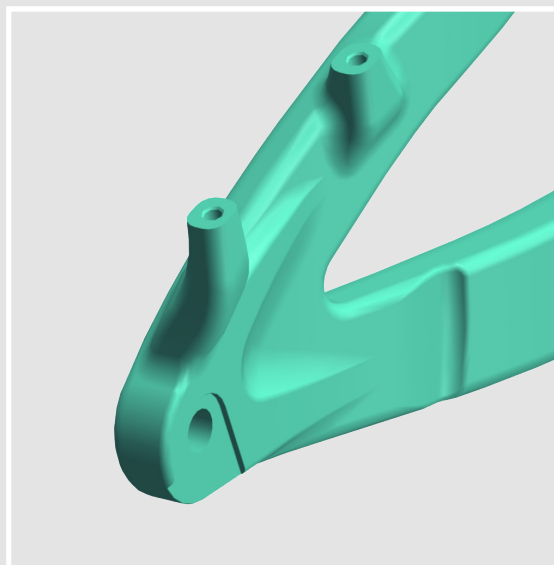
Recommended Torque for this is 10 Nm

290016 - SCO AXLE RWS REAR 148X12 SPARK PLUG 22



Rear Brake:

The brake caliper mount is a standard post mount 180mm with no adapter.



Chainguide & Protection:



The Unplugged chainguide has a maximum chainring size of 34T.

297742 - BLD CHAINGUIDE KIT UNPLUGGED 23

Chainguide & Protection:

There are two protection kits available.

**297496 - BLD C-STAY S-STAY PROTECTOR
UNPLUGGED 23**



Protection kit.

**297744 - BLD PROTECTION
SET UNPLUGGED RT 23**

Maximum Seatpost Insertion:

Please observe the maximum seatpost insertion as not to damage the frame, this number is size specific.

This number should not be exceeded.

Small - 217mm
Medium - 240mm
Large - 275mm
X-Large - 320mm



Dropper Seatpost:

The Unplugged has a Syncros dropper in 34.9mm, there will be 2 service kits available.

297733 - SCO SEATPOST SERV. CART KIT DUNCAN 1.5

297734 - SCO SEATPOST SERV. SEAL KIT DUNCAN 1.5

Headset:

It is important to install the headset correctly depending on the set up required. There are two types of headset cups.

0° & 0.6° (64° & 65°) These can be indentified from the stamp on the inner surface of the headset cup.

The headset is available in two options:

288251 SYN HEADSET ZS56/28.6-ZS56/40 MTB

290060 SCO HEADSET CUP KIT SPARK 22



Do not use a standard headset tool to remove these plastic headset cups.



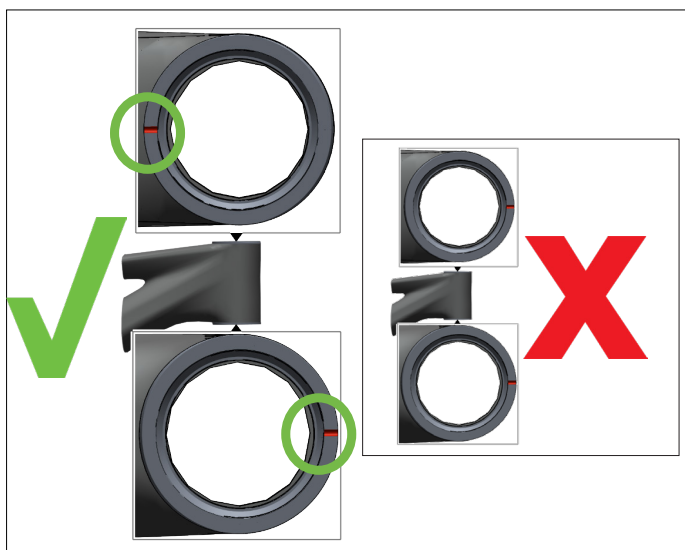
Frame size:

Small: HT090

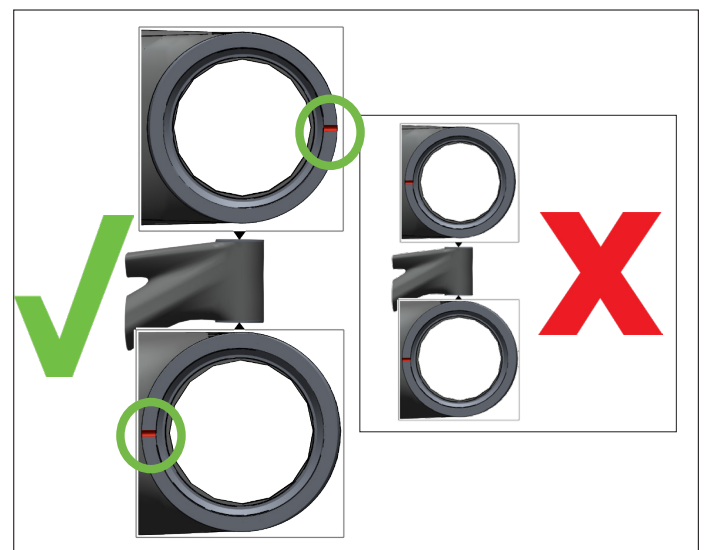
Med: HT105

Large: HT115

XLarge: HT 135



Slacker



Steeper

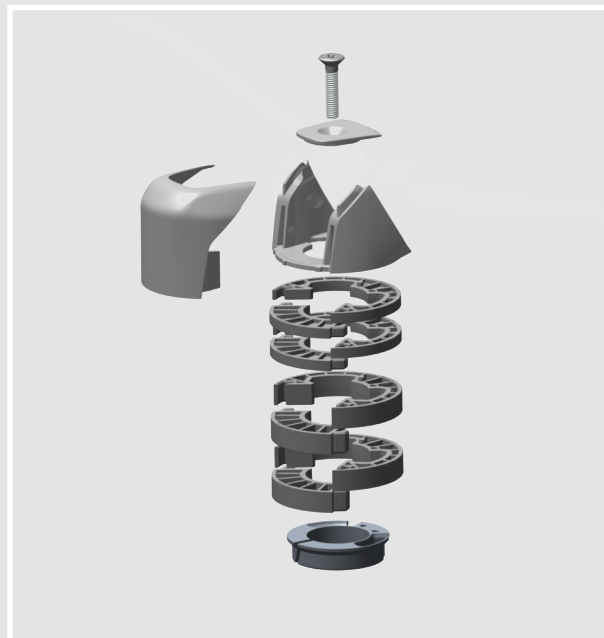
Headset:

For the stem cover and spacers there will be one kit to cover all options.

The headset spacer kit for all Unplugged bikes contains 2 x 5mm / 2 x 10mm / 2 x 2mm + compression ring and the stem cap assembly.

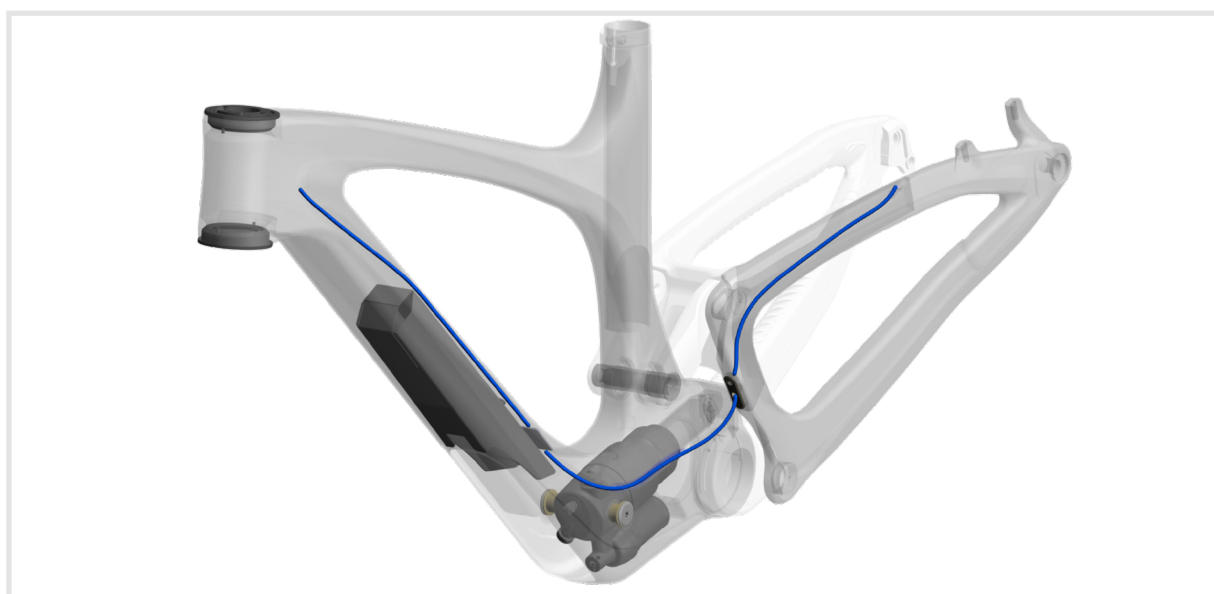
The kit will fit all stem options on this bike, Syncros Hixon IC Combo / AM 1.5 / AM 2.0

**297522 SCO - STEM SPACER/TOP CAP
GENIUS 23**



Cable Routing:

Please ensure all cables are away from any moving components. All cables & hoses will run above the “Save the day kit” and the cable plate. **Gear shifting is wireless only.**



Rear Brake

Cable Routing:

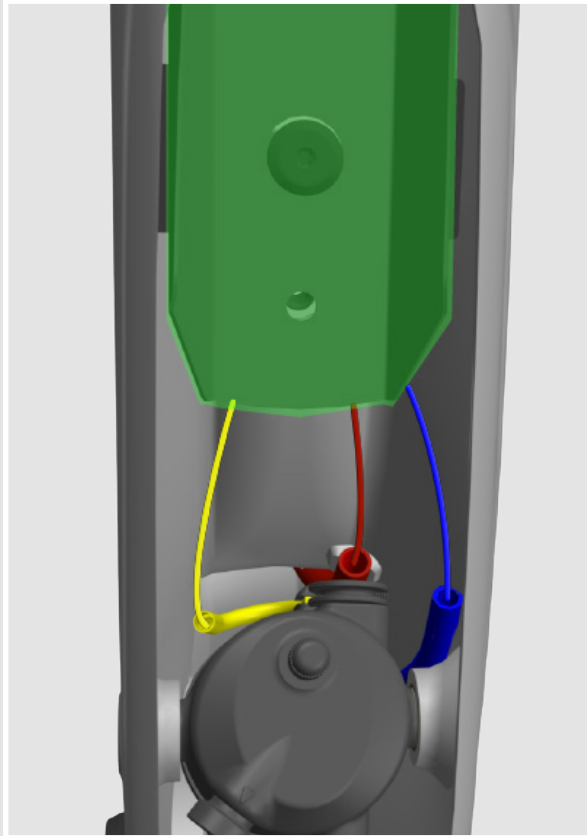


Dropper Seatpost



Tracloc

Cable Routing:



Cable Plate: **Green**

Dropper Seatpost: **Red**

Rear Brake: **Blue**

Tracloc: **Yellow**

The Unplugged has one swingarm cableguide for the rear brake hose.

421510 - BLD CABLEGUIDE R-BRAKE UNPLUGGED 23



Cable Routing:

There will be a larger cover for the base of the downtube, this will cover the access to the shock and cable routing.

297748 BLD - CABLE/SHOCK DT COVER UNPLUGGED 23



Bottle Mounting:

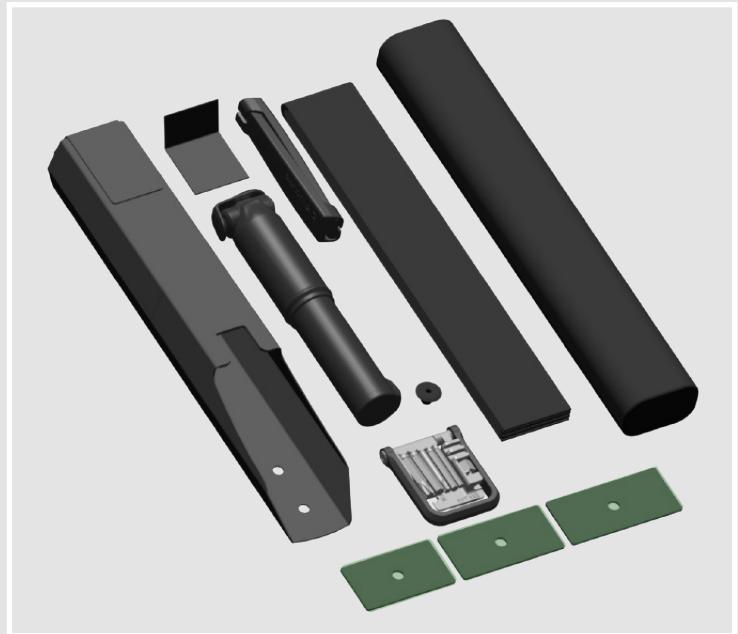
The UNPLUGGED will only accommodate one bottle on the downtube.



Storage:

The Unplugged has a storage box in the DT. This will include a tube, pump, multi tool, tyre levers & cable plates. (complete bike only)

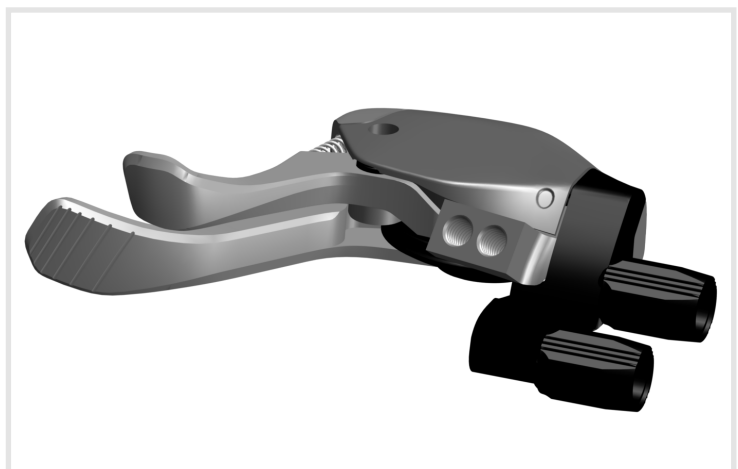
297745 - BLD SAVE THE DAY KIT 2.0



Shock / Suspension / Pivots / linkages:

The rear shock has a tracloc system, this will incorporate the dropper seatpost as well.

291219 - BLD TRACLOC LINKIN 22

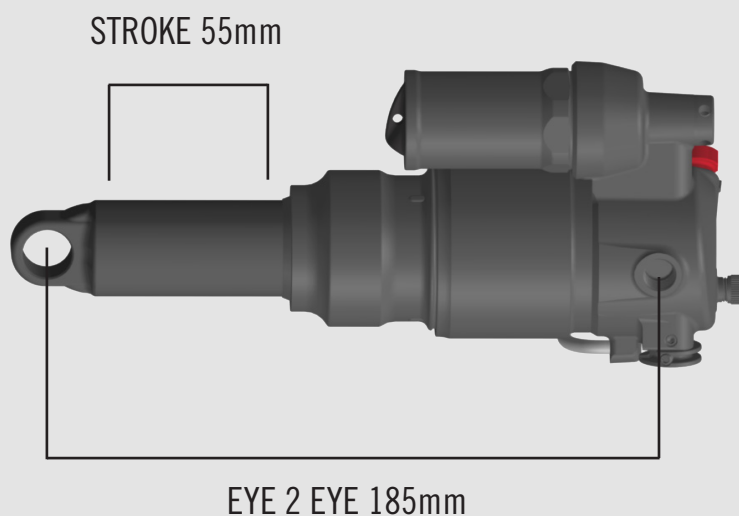


Shock / Suspension / Pivots / linkages:

The lower shock bush is unique to the Unplugged, **17 X 8MM**

294418 - BLD SHOCK BUSH SET FOX LINKIN 22

297709 - BLD SHOCK NOODLE W/O CAP 22/23



REMOVE THE SAG RUBBER, NOT TO BE USED



There are three linkage sets for the Unplugged.

The upper linkage set.

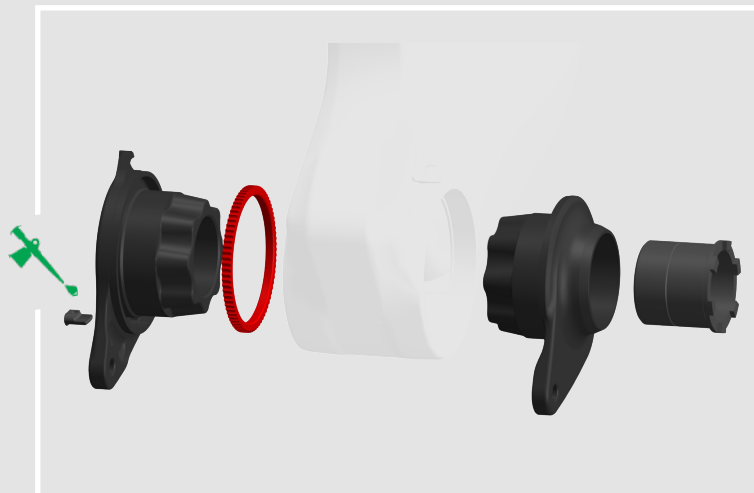
297739 - BLD LINKAGE UPPER UNPLUGGED 23



Shock / Suspension / Pivots / linkages:

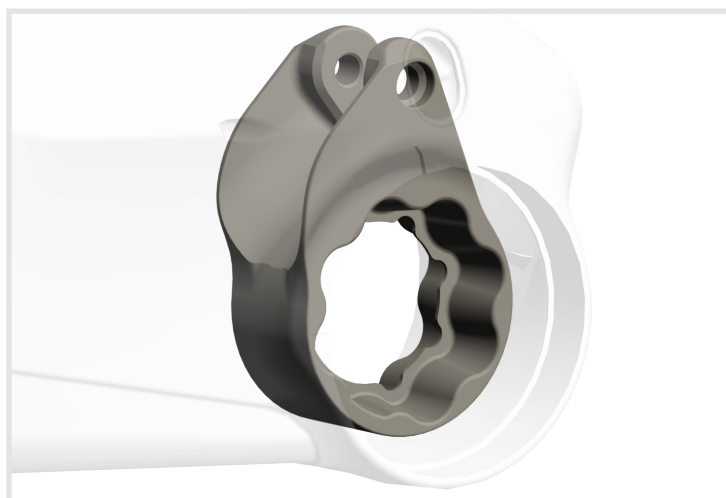
The lower link set (outer)
Each outer link comes with a pre-load ring, ensure that the thread on the pre-load ring is greased.

**297740 - BLD LINKAGE LOWER
OUTER UNPLUGGED 23**

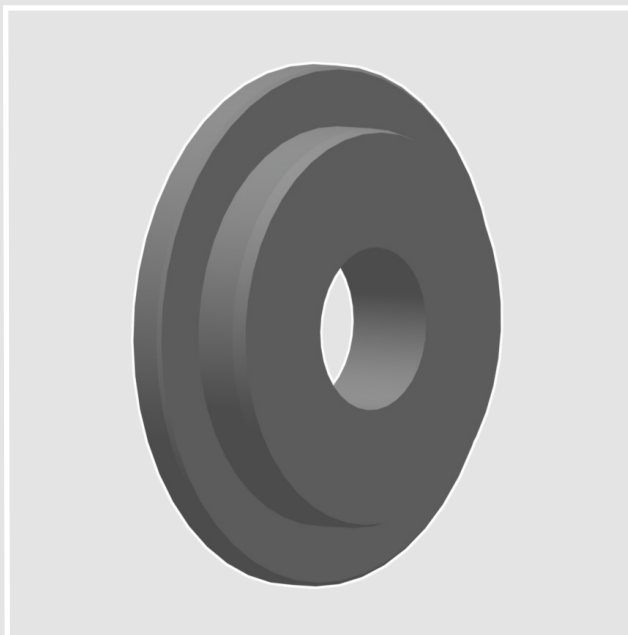


**297741 - BLD LINKAGE INNER
UNPLUGGED 23**

**291285 - BLD SHOCK MOUNT
BOLT KIT LINKIN 22**



Shock / Suspension / Pivots / linkages:



To help the fitting of the main lower bearing 72 x 55 x 9mm (6811) there is a press available that is compatible with the Park HHP-2 headset press.

292672 - BLD TOOL MAIN PIVOT PRESS LINKIN

297743 - BLD SWINGARM REP KIT UNPLUGGED 23

The bearings will be five different types.

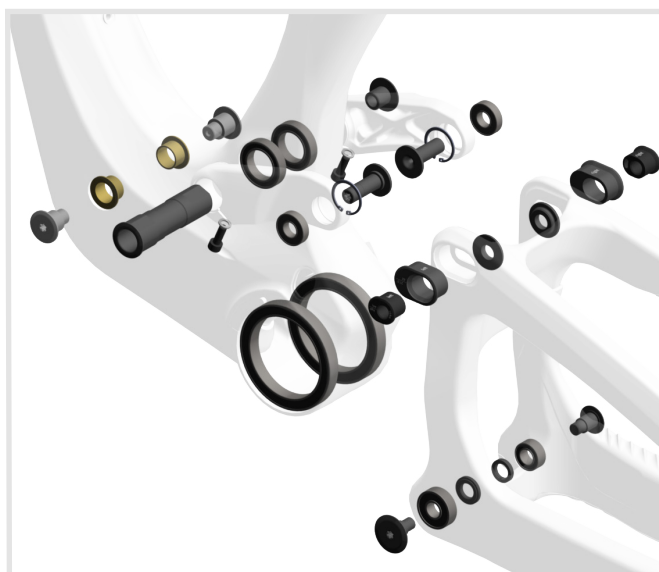
CHAINSTAY FRONT RIGHT-X1-19X10X8MM (3800)

CHAINSTAY FRONT LEFT-X1-26X10X8MM (6000)

BB LINKAGE-72X55X9MM-X2-(6811)

UPPER LINKAGE / SEATSTAY-X2-22X10X6MM (9600)

UPPER LINKAGE/ SEATTUBE-X2-32X20X7MM (6804)



Sag:

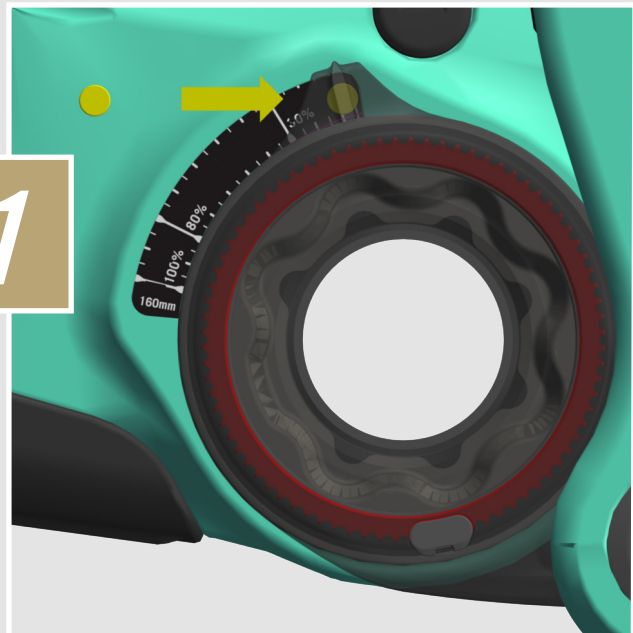
Please ensure standard SAG setting protocol is used when setting the SAG, the below only covers the unique setup of the Unplugged.

For setting the SAG on the Unplugged without assistance you will need the magnet that is supplied with the bike. If this needs to be replaced it can be found with the following.

297745 BLD MAGNET SAG KIT UNPLUGGED 23

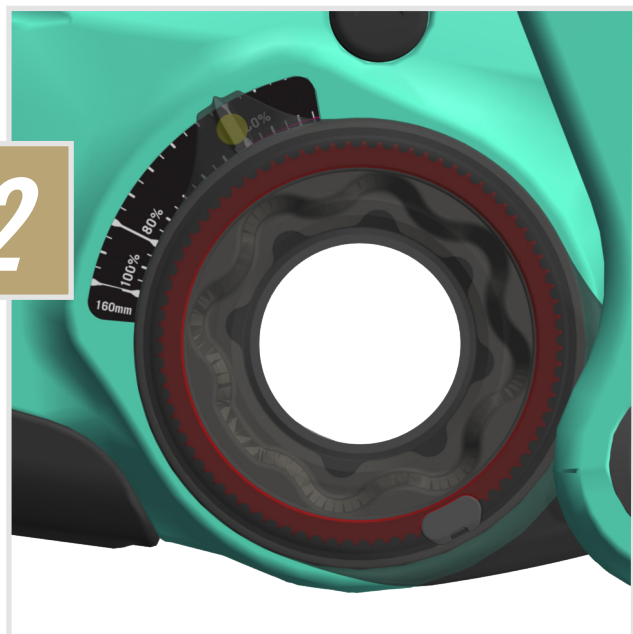
This kit also includes new SAG guides if the travel is to be adjusted.

1



With the bike unloaded slide the magnet under the linkage plate on the left-hand side.

2

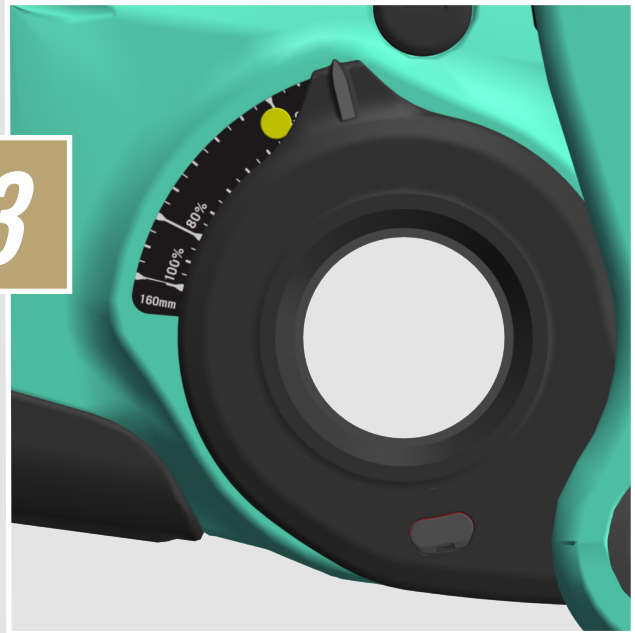


Then sit on the bike, this will allow the linkage to push the magnet into place.

Sag:

Once the rider has dismounted the bike the SAG can be checked. Adjust the shock pressure as required.

3



Suspension Overview:

MAIN PIVOT BB / CHAINSTAY

The Unplugged has a simple bearing system which is easy to maintain.

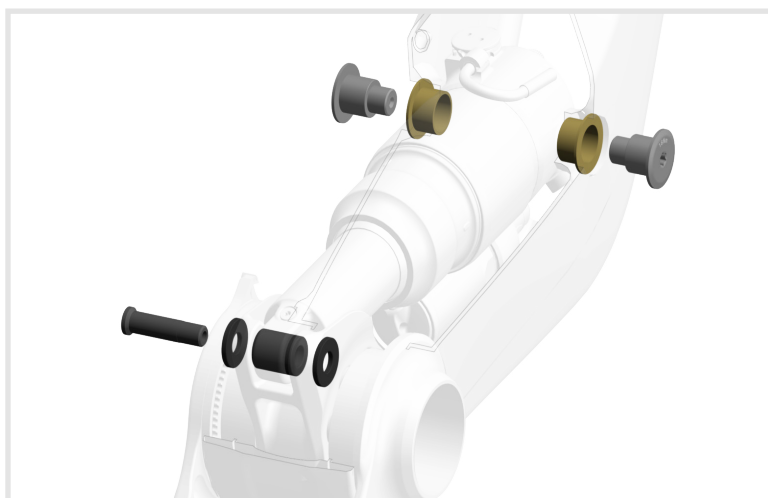


Suspension Overview:

TOP LINKAGE / SEATSTAY



SHOCK MOUNTING

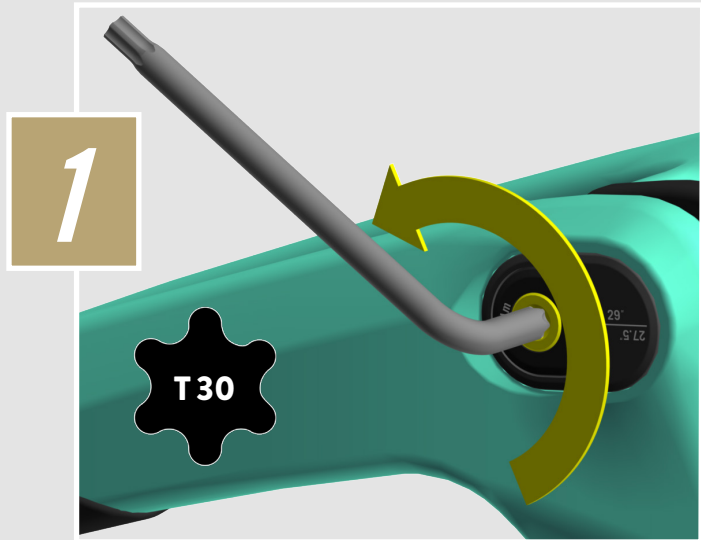


Flip Chip:

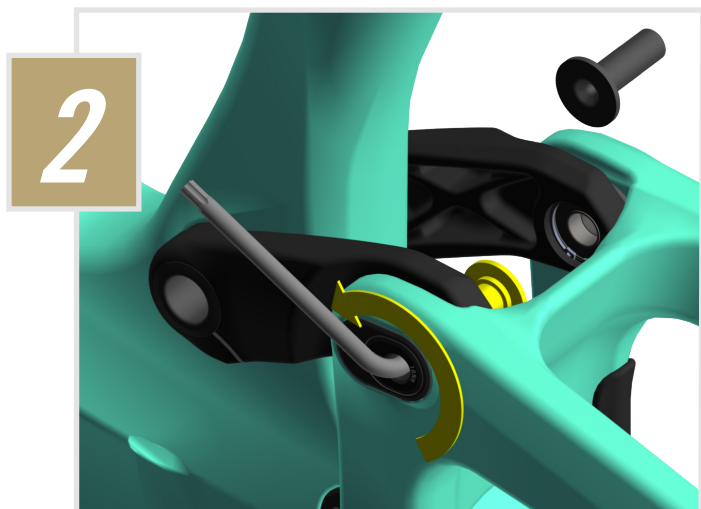
The geometry on the Unplugged can be adjusted by altering the length of the seatstay via the flip chip, this is located at the top of the seatstays.

By flipping the chip the BB height can be altered by 5mm and the seat and head tube angle by 0.4° .

Loosen and remove the right flip chip bolt on the upper pivot of the seatstays.



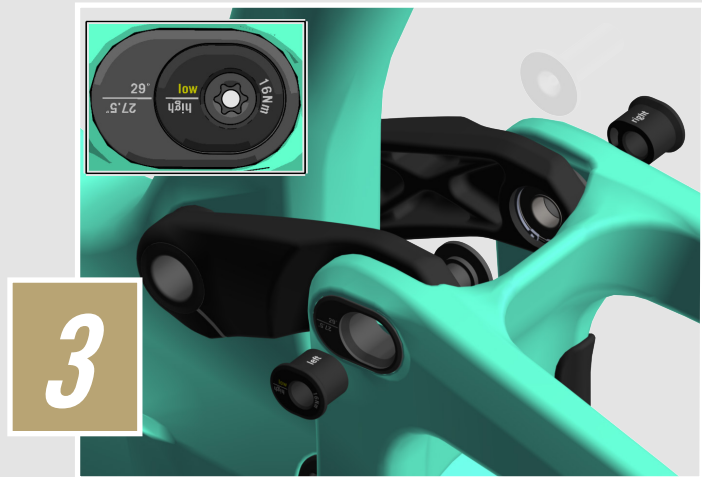
Then loosen and remove the left side Flip Chip bolt.



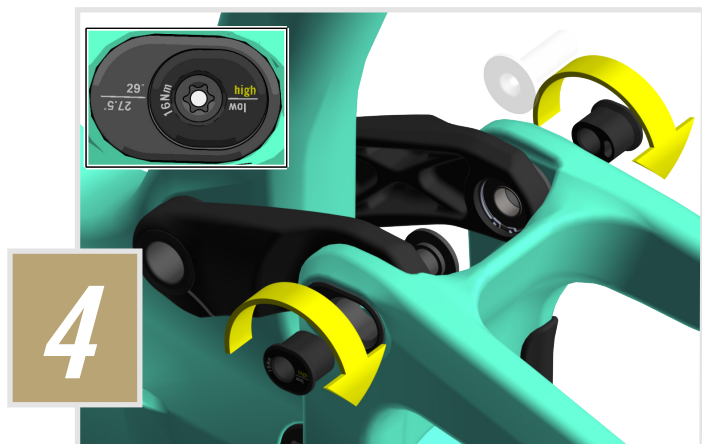
Flip Chip:

The Flip Chip has an inner which determines the high or low setting, and an outer which states the wheel size you select (29"/27.5").

Left & right specific.



By flipping the inner chip you can set the bottom bracket & head angle to either a high or low setting.

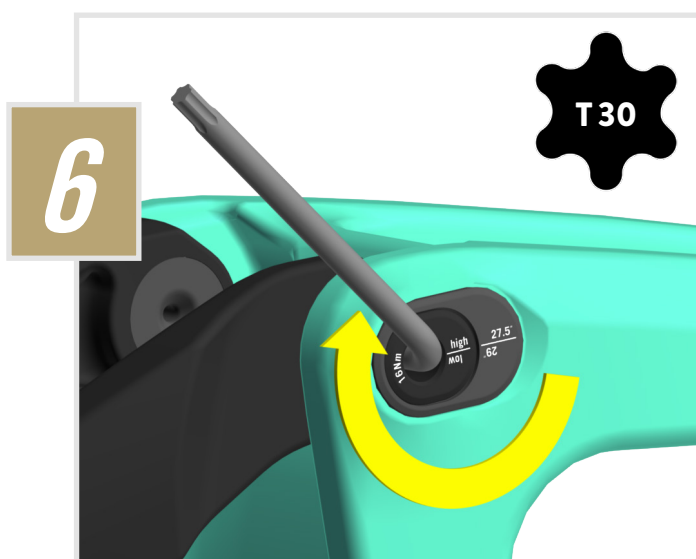


Flip Chip:

By flipping the outer Flip Chip you can define the correct wheel size setting you have decided to use.

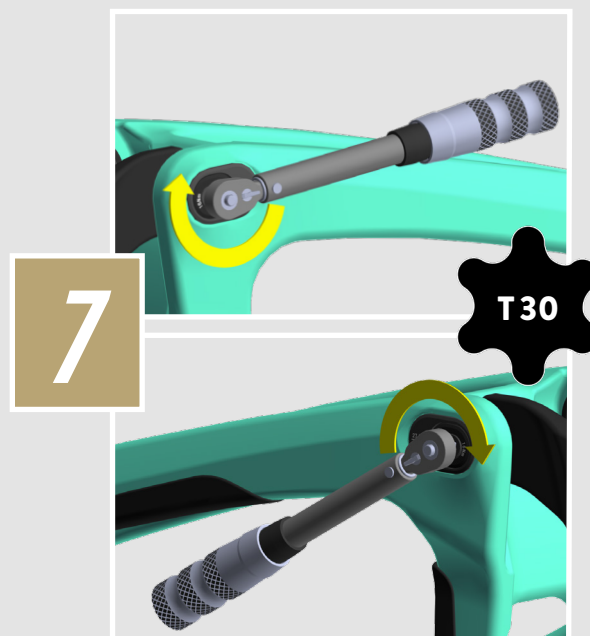


Re-tighten the Flip Chip bolt once your choices have been made, high or low setting and wheels size.



Flip Chip:

Reset the Flip Chip bolt torque to 16Nm.



Guarantee on Bold bikes

Manufacturer's Guarantee

When purchasing a new Bold bicycle from an authorized Bold dealer, SCOTT Sports SA grants a manufacturer's guarantee subject to the following provisions.

Conditions

The manufacturer's guarantee is only granted to the first-time buyer of a Bold bicycle who has purchased it from an authorized Bold dealer.

Duration

The manufacturer's guarantee is granted from the date of purchase for a period of five years on bicycle frames and rear ends. The guarantee period is reduced to three years, if the Bold bicycle is not serviced at least once a year by an authorized Bold dealer. Maintenance services must be carried out in accordance with the maintenance instructions in the Bold manual and must be confirmed there by the stamp and signature of the authorized Bold dealer.

For frames and rear ends of Category 5 bicycle models the duration of the manufacturer's guarantee is limited to two years.

If a defect on the Bold bicycle is remedied within the scope of a manufacturer's guarantee or a warranty claim, the duration of the manufacturer's guarantee is not extended. The manufacturer's guarantee ends, when the first-time buyer transfers ownership of the Bold bicycle to a third person.

Assertion

The manufacturer's guarantee is provided by SCOTT Sports SA, Route du Crochet 11, 1762 Givisiez. The buyer must inspect the Bold bicycle immediately after purchase and notify his authorized Bold dealer at once in writing of any obvious defects. Hidden defects must be reported immediately after their discovery. In the event of a guarantee claim, the Bold bicycle must be handed over to an authorized Bold dealer. The latter will contact Bold to remedy the defect. The assertion of a guarantee claim always requires the presentation of the original proof of purchase as well as the proof of maintenance service in the Bold manual.

Performance of Bold in the event of a guarantee claim

In the event of a guarantee claim, Bold will repair the defect at its own discretion or replace the defective product with a product of similar quality, whereby colour and model deviations are possible. If a repair or replacement is not possible, a purchase price refund will be made taking into account previous use. Bold is entitled to commission third parties to remedy the defect.

Limitations

The manufacturer's guarantee applies exclusively to frames, swingarms and rigid forks of Bold bicycles. Bicycle components are excluded from this manufacturer's guarantee.

The manufacturer's guarantee does not apply to normal wear and tear, damage caused by accidents or other excessive force on the Bold bicycle, corrosion, improper maintenance, incorrect assembly and assembly of unsuitable components or accessories as well as cosmetic defects, for example in the varnish.

The manufacturer's guarantee does not apply to Bold bicycles that have been used in a rental shop.

Miscellaneous

These manufacturer's guarantee provisions apply to all Bold bicycles as of model year 2022.

Statutory warranty rights of the buyer and guarantees of component manufacturers (Shimano, SRAM etc.) remain unaffected by this manufacturer's guarantee.

The place of jurisdiction for all disputes in connection with this manufacturer's guarantee is Fribourg, Switzerland. This manufacturer's guarantee is subject to Swiss law to the exclusion of all legislation that refers to foreign law.

bold **C Y C L E S**

All rights reserved ©2023 SCOTT Sports SA

The information contained in this techbook is in various languages but only the English version will be relevant in case of conflict.

Although SCOTT Sports SA has published all information contained in this techbook after careful examination, SCOTT Sports SA assumes no liability for being up-to-date, correct, reliable or complete. SCOTT Sports SA reserves the right to change the content of this techbook, particularly colors, materials and specifications, at any time without prior notice. Any liability shall be exempted.

Products shown may not be available in all regions, please check with your local SCOTT retailer for availability.

BOLD CYCLES
SCOTT SPORTS SA
Route du Crochet 11
1762 Givisiez
Switzerland
www.scott-sports.com

Authorized Representative: Beat Zaugg, Pascal Ducrot